



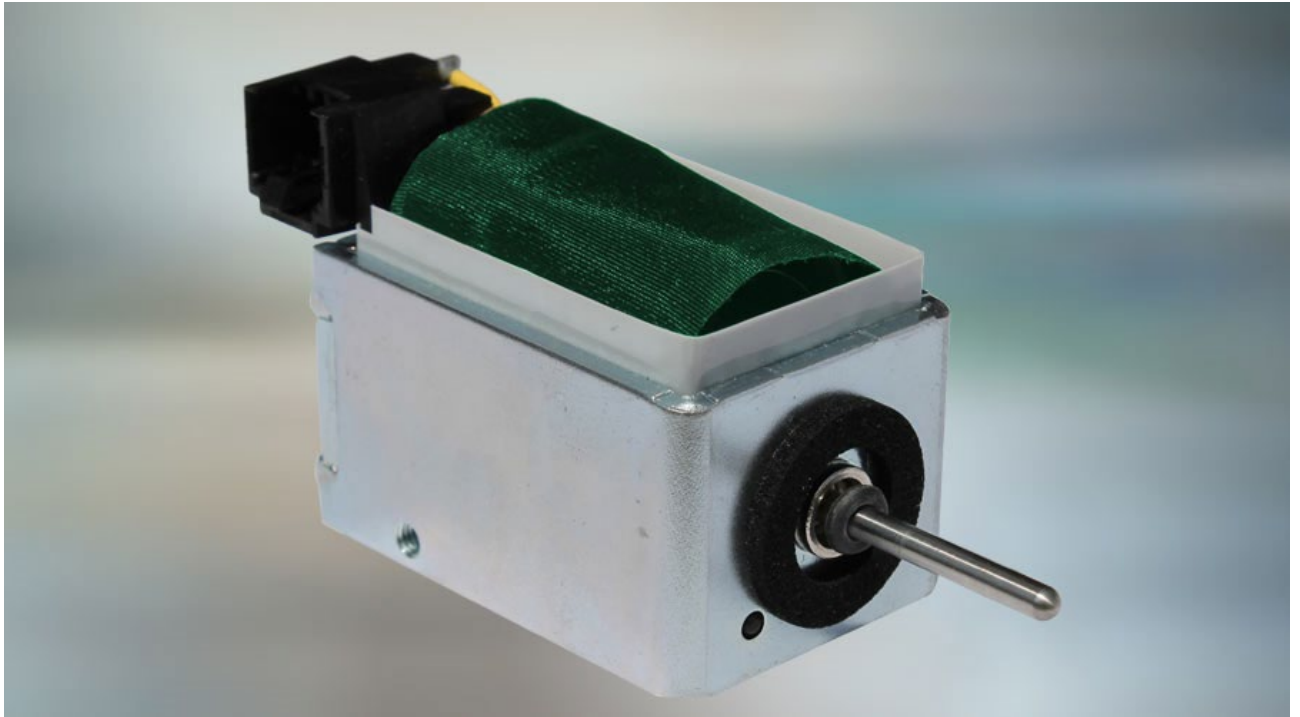
Solenoid Solutions for Vending Machines

Leinfelden-Echterdingen, 01 July 2021. Our everyday lives are unthinkable without machines. They are used in different places: As pack stations, ATMs or vending machines for food or beverages to name just a few examples. The manifold uses and locations pose a variety of technological challenges to the mechanical and electronic components of the devices.

In spite of their different fields of application, all these devices basically perform the same task – handing out the requested goods by means of an electronic mechanism. Machines contain complex technology, and their installation parts have to work reliably at all times. This also applies to the numerous solenoids in each of these machines. They may be located in the coin compartment, installed in flaps and doors or used in some other way. It is impossible to think of vending machines without solenoids. Turning, pushing, pulling - all requirements occur in vending machines.

As vending machines are often set up outdoors, they are usually exposed to adverse conditions - extreme temperature fluctuations, humidity, dirt and vandalism being the usual challenges. If the solenoid fails, the whole machine is affected. This is why it is indispensable for solenoids to reliably perform their tasks. Usually, only small installation spaces are available, plus further requirements to be considered such as frequent actuations and thus a particularly long service life. As versatile as its appearance is the application range of electro-magnetism.

Solenoids from EBE sensors + motion have stood the test in vending machines millions of times. They are particularly robust and reliable. The solenoids are available in many models and designs. Whether in pulling or pushing design, with several million or just a few thousand actuations, in open or closed design. Our individual development allows to design high quality solenoids for special requirements. The installation depends on the respective application. As needed, a variety of approval norms can be fulfilled. There are further customization options available, e.g. in terms of performance, switching time or stroke, to create the optimum solenoid for any given requirement.



Picture file: EBE_Elektromagnete.jpg

Picture text: The wide range and many adaptations of the EBE solenoids allow the implementation of individual solutions for use in vending machines.
Picture source: EBE Elektro-Bau-Elemente GmbH



Picture file: EBE_Geldautomat.jpg

Picture text: Solenoids are used at various places in ATMs. Reliable and robust products are a precondition for this application.

Picture source: ifeelstock /stock.adobe.com

Publication of photos is licence-free and free of charge. Source information requested.

Short Profile

The company EBE Elektro-Bau-Elemente GmbH (brand name: EBE sensors + motion) based in Leinfelden-Echterdingen near Stuttgart develops and manufactures OEM-products in the fields of sensor technology, components for HMI-interfaces as well as actuator and mechatronics technology. The focus lies on capacitive and inductive sensors based on the technologies developed in-house and mechatronic solutions for industry, appliances, medicine and mobility. The sensor program also includes level sensors, pressure sensors, position sensors and capacitive buttons. Furthermore, EBE develops and manufactures customer-specific solenoids and robust rotary switches, buttons and encoders and adapts them to the customer requirements. The company sees itself as a competence center for the development and production of sensor systems and drive technology.

Contact

EBE Elektro-Bau-Elemente GmbH

External Press Officer: Doris Tischer

Sielminger Str. 63, 70771 Leinfelden-Echterdingen, Germany

Tel. +49 711 79986-0, E-Mail: press@ebe.de