



Contactless Level Sensors for Continuous Measurements

Leinfelden-Echterdingen, 14 November 2022. The new level sensors from EBE sensors + motion allow for the contactless measurement of a great variety of media. Based on an intelligent modular system, the sensor can be adapted to the requirements of the application.

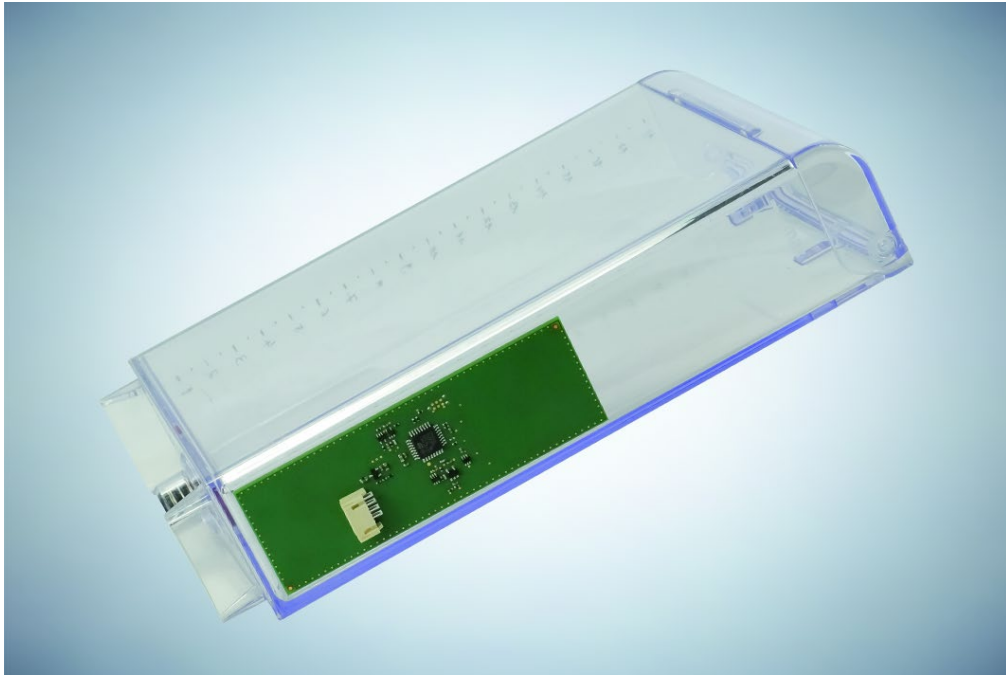
The capacitive level sensors from EBE sensors + motion use a contactless sensor technology to continuously measure filling levels of liquids as well as granular or powdery media. The level sensors can be attached outside of tanks or other containers and are capable of measuring through almost any non-metallic material. The standard measuring range is up to 100 mm and can be extended as needed on request. Nevertheless, the sensor is very compact and also suitable for small installation spaces.

Reliable Measurement and Easy Setup

The user can easily calibrate the sensor system to set the measurement of the required filling levels, media and applications. This makes it highly flexible for a great variety of applications. Even so, thanks to the capacitive technology of EBE the level sensors convince by great precision and reliability. This technology is capable of compensating disturbances in the immediate surroundings, e.g. if the tank is being touched. With a measuring range of 10 cm the precision typically amounts to <1 mm. The level sensors from EBE sensors + motion provide by default a digital interface that can be adapted to the specific customer requirements. Within the framework of an intelligent modular system, further parameters can also be adapted to individual applications.

For Use in Sensitive Industries

The non-invasive design that does without direct contact between the sensor and the medium avoids the frequent challenges with regard to media compatibility and sterility. For this reason, EBE level sensors are particularly suitable for measuring tasks in medical engineering, in the chemical and pharmaceutical industry, in biotechnology, and in the food industry.



Picture file: EBE_product image_level sensor_Standard

Picture text: The capacitive level sensors from EBE sensors + motion allow for the contactless measuring of a great variety of media. The sensors convince by compact design and easy calibration.

Picture source: EBE Elektro-Bau-Elemente GmbH

Publication of photos is licence-free and free of charge. Source information requested.

Short Profile

The company EBE Elektro-Bau-Elemente GmbH (brand name: EBE sensors + motion) based in Leinfelden-Echterdingen near Stuttgart develops and manufactures OEM-products in the fields of sensor technology, components for HMI-interfaces as well as actuator and mechatronics technology. The focus lies on capacitive and inductive sensors based on the technologies developed in-house and mechatronic solutions for industry, appliances, medicine and mobility. The sensor program also includes level sensors, pressure sensors, position sensors and capacitive buttons. Furthermore, EBE develops and manufactures customer-specific solenoids and robust rotary switches, touch sensors and encoders and adapts them to the customer requirements. The company sees itself as a competence center for the development and production of sensor systems and drive technology.

Contact

EBE Elektro-Bau-Elemente GmbH
External Press Officer: Doris Tischer
Sielminger Str. 63, 70771 Leinfelden-Echterdingen, Germany
Tel. +49 711 79986-0, E-Mail: press@ebe.de